

LUMINARIA DE VIALIDAD

Características

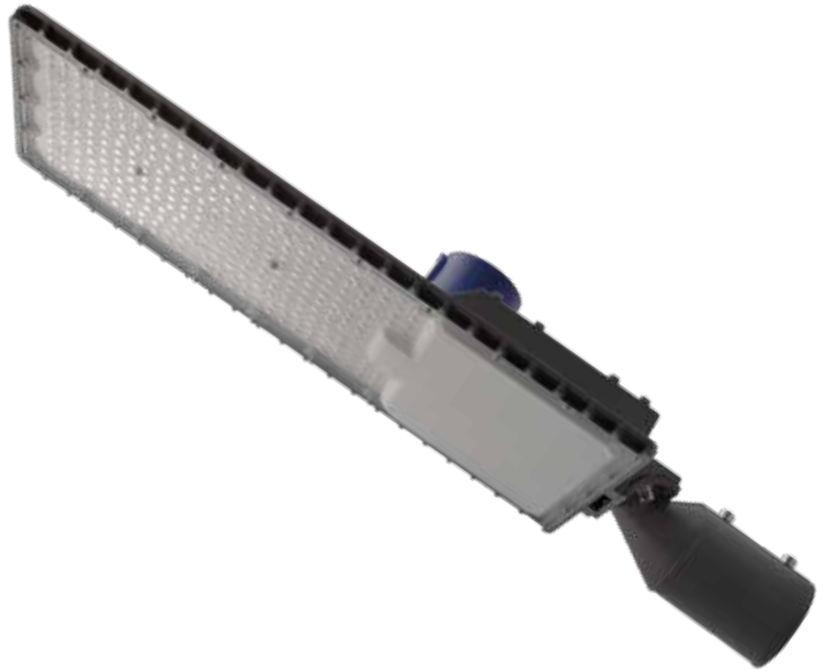
Material	Fe
Terminado	Gris
Pantalla	Pc
Índice de protección	IP65
Base (poste)	2.5 Pulgadas
Dimensiones mm	675*255*100 mm
Lúmenes	15,000 Lm
Temperatura	6,500K
Ángulo	70 X 140°
Tipo de curva de distribución	Asimétrica

Parámetros Eléctricos

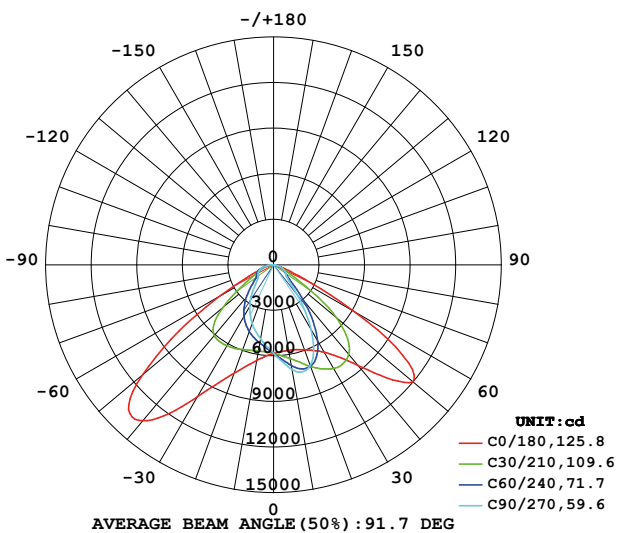
Tensión Nominal [V~]	85-305V~
Consumo de Potencia [W]	150W
Frecuencia Nominal [Hz]	50/60Hz
Consumo de Corriente [A]	1.76 - 0.49 A
Temperatura de Operación	-10 a 45 °C

Beneficios

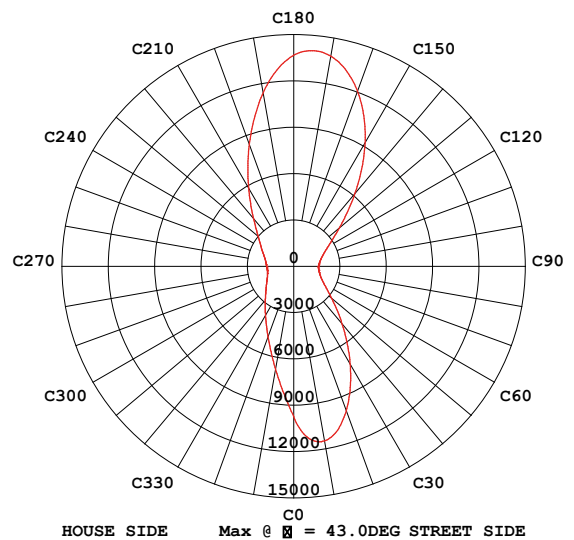
Garantía	5 Años de Garantía *
Certificación	NOM ANCE



INTENSITY DISTRIBUTION DIAGRAM
IN C PLANS

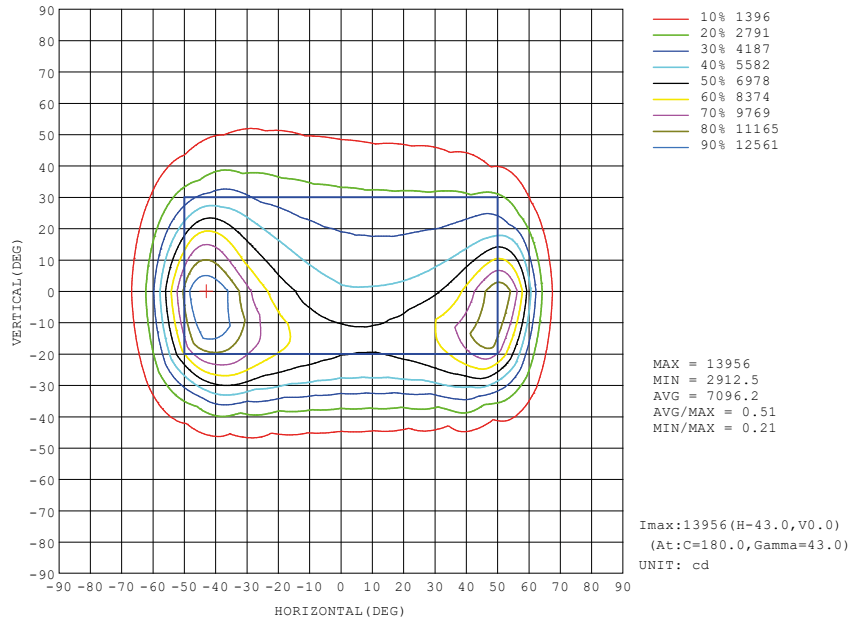
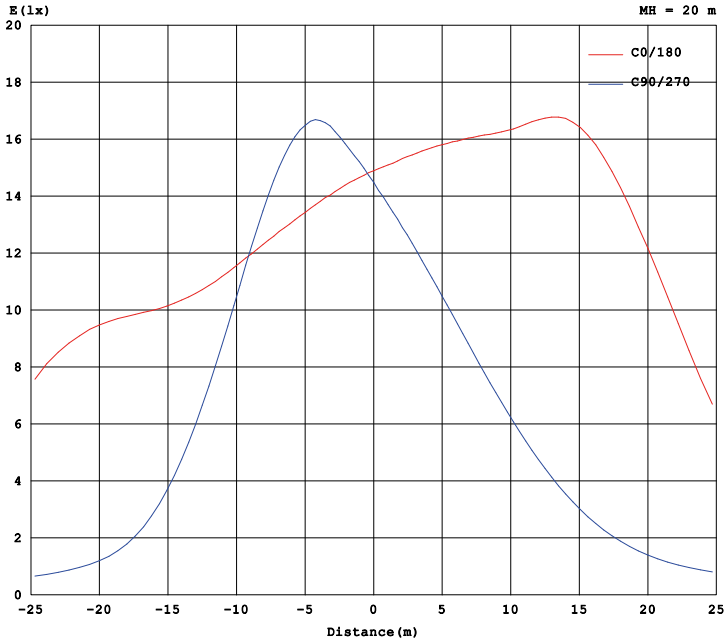


MAX INTENSITY CONE SURFACE
DISTRIBUTION DIAGRAM

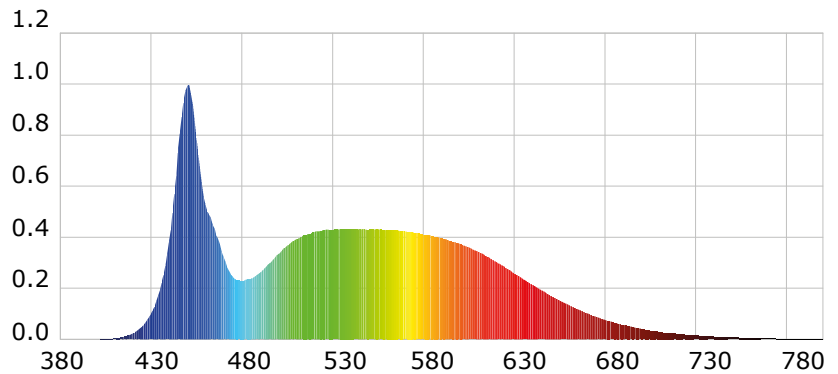
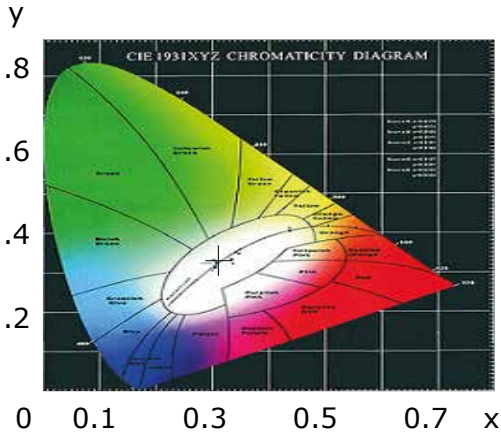


Características y Valores Aproximados
*Importante revisar la póliza de garantía de cada producto

Planar Illuminance Curve



CIE1931 CHROMATICITY DIAGRAM



Parámetros colorimétricos

CCT: Tc=6548K (duv=0.00655)

CRI: Ra= 83.9, avgR(1~14)= 76.6, avgR(1~15)= 76.6

Parámetros fotométricos

Luminous Flux: 15623.16 Lm

EEL: 0.14

Pupil Flux: 29708.74 Plm

Efficiency: 100.79 Lm/W

Energy Efficiency Class: A+ (EU 874-2012)

Pupil Lumens Per Watt: 191.67 Plm/W

Radiant Power: 50.228 W

Pupil Factor (Kp): 1.902

Parámetros eléctricos

Voltage: 219.70V

Power Factor: 0.9880

Current: 0.7130A

Frequency: 60.00Hz

Power: 155.00W